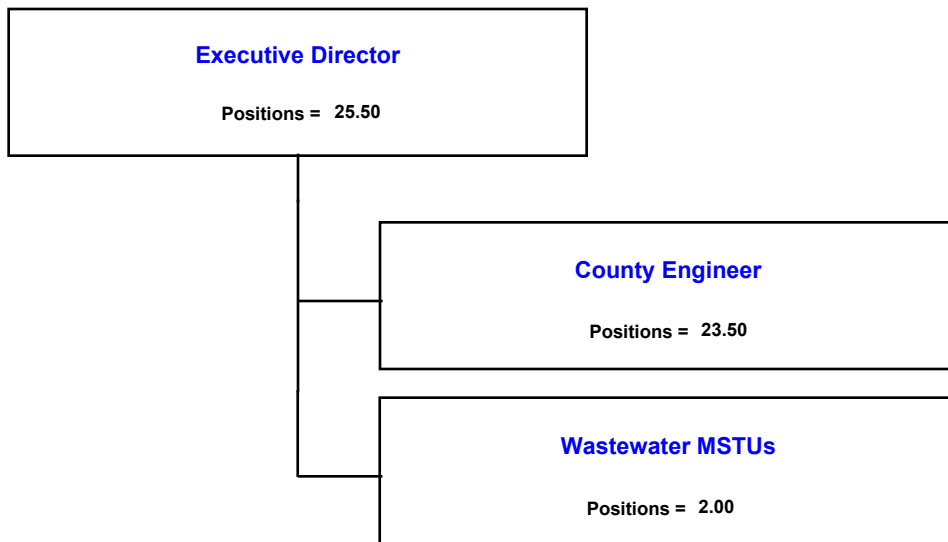


Engineering Business Center



Monroe County Board of County Commissioners
Fiscal Year 2008 Tentatively Adpoted September 12, 2007 Proposed Budget

Engineering Business Center

Budgetary Costs	FY 2006 Actual	FY 2007 Adopted	FY 2008 Continuation	FY 2008 Issues	FY 2008 Proposed	FY 2008 Variance
Personnel Expenditures	1,262,778	2,375,256	2,066,149	0	2,066,149	-309,107
Operating Expenditures	1,714,262	7,489,236	9,272,396	0	9,272,396	1,783,160
Capital Outlay Expenditures	18,719,619	58,690,006	24,581,084	0	24,581,084	-34,108,922
Total Net Operating Budget	21,696,659	68,554,498	35,919,629	0	35,919,629	-32,634,869
Total Budgetary Costs	21,696,659	68,554,498	35,919,629	0	35,919,629	-32,634,869

Funding Sources	FY 2006 Actual	FY 2007 Adopted	FY 2008 Proposed	FY 2008 Variance
General Fund	46,284	262,564	47,202	-215,362
Road And Bridge Fund	648,008	926,114	836,241	-89,873
Impact Fees Fund - Roadway	767,857	5,506,043	4,896,607	-609,436
Impact Fees Fund - Parks	278,790	1,137,000	750,517	-386,483
Marathon Municipal Service Taxing Unit	1,045,912	1,597,339	213,380	-1,383,959
Bay Point Municipal Service Taxing Unit	0	77,000	83,693	6,693
Big Coppitt Municipal Service Taxing Unit	0	237,763	224,975	-12,788
Key Largo Municipal Service Taxing Unit	527,333	2,096,822	1,099,649	-997,173
Stock Island Wastewater MSTU	0	173,494	322,581	149,087
Cudjoe-Sugarloaf Municipal Service Taxing Unit	0	281,341	290,987	9,646
Big Pine Municipal Service Taxing Unit	0	457,668	0	-457,668
Conch Key Municipal Service Taxing Unit.	0	6,313	5,438	-875
Long Key, Layton Municipal Service Taxing Unit	0	40,285	31,808	-8,477
Duck Key Municipal Service Taxing Unit	0	92,839	126,403	33,564
One Cent Infra-structure Sales Tax	9,843,823	39,387,299	20,432,075	-18,955,224
2003 Revenue Bonds	8,518,486	16,182,652	6,393,620	-9,789,032
Card Sound Bridge	20,167	91,962	164,453	72,491
Total Revenues	21,696,659	68,554,498	35,919,629	-32,634,869

Staffing Summary	FY 2006 Actual	FY 2007 Adopted	FY 2008 Continuation	FY 2008 Issues	FY 2008 Proposed	FY 2008 Variance
County Engineer	22.00	23.00	23.50	0.00	23.50	0.50
Wastewater MSTUs	0.00	0.00	2.00	0.00	2.00	2.00
Total Full-Time Equivalentents (FTE)	22.00	23.00	25.50	0.00	25.50	2.50
Total Authorized Positions	22.00	23.00	25.50	0.00	25.50	2.50

**Monroe County Board of County Commissioners
Fiscal Year 2008 Tentatively Adpoted September 12, 2007 Proposed Budget**

County Engineer

Mission Statement

To effectively manage projects within contract budget and time constraints, ensuring the coordination, preparation and presentation of contracts, amendments, change orders, work authorizations and payments, while protecting the best interests of Monroe County and the safety of its citizens and visitors.

Summary of Services Provided

Engineering services, including construction management, surveying, and inspection of a variety of county projects, and management of the County's 7-Year Roadway /Bicycle Path Plan and Capital Improvement Plan.

Budgetary Costs	FY 2006 Actual	FY 2007 Adopted	FY 2008 Continuation	FY 2008 Issues	FY 2008 Proposed	FY 2008 Variance
Personnel Expenditures	838,940	1,814,769	1,912,729	0	1,912,729	97,960
Operating Expenditures	140,449	171,372	139,372	0	139,372	-32,000
Capital Outlay Expenditures	60,681	14,520	386,000	0	386,000	371,480
Total Net Operating Budget	<u>1,040,070</u>	<u>2,000,661</u>	<u>2,438,101</u>	<u>0</u>	<u>2,438,101</u>	<u>437,440</u>
Total Budgetary Costs	<u>1,040,070</u>	<u>2,000,661</u>	<u>2,438,101</u>	<u>0</u>	<u>2,438,101</u>	<u>437,440</u>

Funding Sources	FY 2006 Actual	FY 2007 Adopted	FY 2008 Proposed	FY 2008 Variance
General Fund	46,284	262,564	47,202	-215,362
Road And Bridge Fund	648,008	926,114	836,241	-89,873
One Cent Infra-structure Sales Tax	325,612	720,021	1,390,205	670,184
Card Sound Bridge	20,167	91,962	164,453	72,491
Total Revenues	<u>1,040,070</u>	<u>2,000,661</u>	<u>2,438,101</u>	<u>437,440</u>

Staffing Summary	FY 2006 Actual	FY 2007 Adopted	FY 2008 Continuation	FY 2008 Issues	FY 2008 Proposed	FY 2008 Variance
Administrative Support	10.00	6.00	6.50	0.00	6.50	0.50
Officials & Administrators	0.00	2.00	3.00	0.00	3.00	1.00
Other	0.00	4.00	4.00	0.00	4.00	0.00
Professionals	11.00	10.00	9.00	0.00	9.00	-1.00
Technicians	1.00	1.00	1.00	0.00	1.00	0.00
Total Full-Time Equivalents (FTE)	<u>22.00</u>	<u>23.00</u>	<u>23.50</u>	<u>0.00</u>	<u>23.50</u>	<u>0.50</u>
Total Authorized Positions	<u>22.00</u>	<u>23.00</u>	<u>23.50</u>	<u>0.00</u>	<u>23.50</u>	<u>0.50</u>

**Monroe County Board of County Commissioners
Fiscal Year 2008 Tentatively Adpoted September 12, 2007 Proposed Budget**

Physical Environment Projects

Major Variances

• Budget has been adjusted to reflect timing of capital projects. See capital plan for more details. The Board of County Commissioners is increasing the portion of Capital expenditures dedicated to Wastewater projects.

Budgetary Costs	FY 2006 Actual	FY 2007 Adopted	FY 2008 Continuation	FY 2008 Issues	FY 2008 Proposed	FY 2008 Variance
Personnel Expenditures	54,068	62,825	0	0	0	-62,825
Capital Outlay Expenditures	8,476,291	14,187,175	11,550,000	0	11,550,000	-2,637,175
Total Net Operating Budget	8,530,359	14,250,000	11,550,000	0	11,550,000	-2,700,000
Total Budgetary Costs	8,530,359	14,250,000	11,550,000	0	11,550,000	-2,700,000

Funding Sources	FY 2006 Actual	FY 2007 Adopted	FY 2008 Proposed	FY 2008 Variance
One Cent Infra-structure Sales Tax	8,530,359	14,250,000	11,550,000	-2,700,000
Total Revenues	8,530,359	14,250,000	11,550,000	-2,700,000

**Monroe County Board of County Commissioners
Fiscal Year 2008 Tentatively Adpoted September 12, 2007 Proposed Budget**

General Gov Cap Projects

Major Variances

Budget has been adjusted to reflect timing of capital projects. See capital plan for more details.

Budgetary Costs	FY 2006 Actual	FY 2007 Adopted	FY 2008 Continuation	FY 2008 Issues	FY 2008 Proposed	FY 2008 Variance
Personnel Expenditures	190,400	188,475	0	0	0	-188,475
Operating Expenditures	0	257,000	843,200	0	843,200	586,200
Capital Outlay Expenditures	6,925,910	15,812,623	5,861,420	0	5,861,420	-9,951,203
Total Net Operating Budget	7,116,310	16,258,098	6,704,620	0	6,704,620	-9,553,478
Total Budgetary Costs	7,116,310	16,258,098	6,704,620	0	6,704,620	-9,553,478

Funding Sources	FY 2006 Actual	FY 2007 Adopted	FY 2008 Proposed	FY 2008 Variance
One Cent Infra-structure Sales Tax	226,706	3,993,446	1,811,000	-2,182,446
2003 Revenue Bonds	6,889,604	12,264,652	4,893,620	-7,371,032
Total Revenues	7,116,310	16,258,098	6,704,620	-9,553,478

Parks & Recreation Capital Projects

Major Variances

Budget has been adjusted to reflect timing of capital projects. See capital plan for more details.

Budgetary Costs	FY 2006 Actual	FY 2007 Adopted	FY 2008 Continuation	FY 2008 Issues	FY 2008 Proposed	FY 2008 Variance
Personnel Expenditures	32,254	62,825	0	0	0	-62,825
Operating Expenditures	129	2,000,000	4,428,941	0	4,428,941	2,428,941
Capital Outlay Expenditures	246,541	12,353,675	613,458	0	613,458	-11,740,217
Total Net Operating Budget	<u>278,924</u>	<u>14,416,500</u>	<u>5,042,399</u>	<u>0</u>	<u>5,042,399</u>	<u>-9,374,101</u>
Total Budgetary Costs	<u>278,924</u>	<u>14,416,500</u>	<u>5,042,399</u>	<u>0</u>	<u>5,042,399</u>	<u>-9,374,101</u>

Funding Sources	FY 2006 Actual	FY 2007 Adopted	FY 2008 Proposed	FY 2008 Variance
One Cent Infra-structure Sales Tax	278,924	14,416,500	5,042,399	-9,374,101
Total Revenues	<u>278,924</u>	<u>14,416,500</u>	<u>5,042,399</u>	<u>-9,374,101</u>

**Monroe County Board of County Commissioners
Fiscal Year 2008 Tentatively Adpoted September 12, 2007 Proposed Budget**

Public Safety Capital Projects

Major Variances

Budget has been adjusted to reflect timing of capital projects. See capital plan for more details.

Budgetary Costs	FY 2006 Actual	FY 2007 Adopted	FY 2008 Continuation	FY 2008 Issues	FY 2008 Proposed	FY 2008 Variance
Personnel Expenditures	76,322	94,325	0	0	0	-94,325
Operating Expenditures	0	0	135,389	0	135,389	135,389
Capital Outlay Expenditures	1,744,091	6,813,007	503,082	0	503,082	-6,309,925
Total Net Operating Budget	1,820,413	6,907,332	638,471	0	638,471	-6,268,861
Total Budgetary Costs	1,820,413	6,907,332	638,471	0	638,471	-6,268,861

Funding Sources	FY 2006 Actual	FY 2007 Adopted	FY 2008 Proposed	FY 2008 Variance
One Cent Infra-structure Sales Tax	478,471	6,007,332	638,471	-5,368,861
2003 Revenue Bonds	1,341,942	900,000	0	-900,000
Total Revenues	1,820,413	6,907,332	638,471	-6,268,861

Monroe County Board of County Commissioners
Fiscal Year 2008 Tentatively Adpoted September 12, 2007 Proposed Budget

Human Services Capital Projects

Major Variances

Budget has been adjusted to reflect timing of capital projects. See capital plan for more details.

Budgetary Costs	FY 2006 Actual	FY 2007 Adopted	FY 2008 Continuation	FY 2008 Issues	FY 2008 Proposed	FY 2008 Variance
Personnel Expenditures	42,488	62,825	0	0	0	-62,825
Operating Expenditures	0	0	1,480,000	0	1,480,000	1,480,000
Capital Outlay Expenditures	248,204	2,955,175	20,000	0	20,000	-2,935,175
Total Net Operating Budget	290,692	3,018,000	1,500,000	0	1,500,000	-1,518,000
Total Budgetary Costs	290,692	3,018,000	1,500,000	0	1,500,000	-1,518,000

Funding Sources	FY 2006 Actual	FY 2007 Adopted	FY 2008 Proposed	FY 2008 Variance
One Cent Infra-structure Sales Tax	3,751	0	0	0
2003 Revenue Bonds	286,941	3,018,000	1,500,000	-1,518,000
Total Revenues	290,692	3,018,000	1,500,000	-1,518,000

Monroe County Board of County Commissioners
Fiscal Year 2008 Tentatively Adpoted September 12, 2007 Proposed Budget

Impact Fees Roadways

Major Variances

Budget has been adjusted to reflect available funding.

Budgetary Costs	FY 2006 Actual	FY 2007 Adopted	FY 2008 Continuation	FY 2008 Issues	FY 2008 Proposed	FY 2008 Variance
Personnel Expenditures	13,014	62,825	0	0	0	-62,825
Operating Expenditures	439	0	0	0	0	0
Capital Outlay Expenditures	754,403	5,443,218	4,896,607	0	4,896,607	-546,611
Total Net Operating Budget	<u>767,857</u>	<u>5,506,043</u>	<u>4,896,607</u>	<u>0</u>	<u>4,896,607</u>	<u>-609,436</u>
Total Budgetary Costs	<u>767,857</u>	<u>5,506,043</u>	<u>4,896,607</u>	<u>0</u>	<u>4,896,607</u>	<u>-609,436</u>

Funding Sources	FY 2006 Actual	FY 2007 Adopted	FY 2008 Proposed	FY 2008 Variance
Impact Fees Fund - Roadway	767,857	5,506,043	4,896,607	-609,436
Total Revenues	<u>767,857</u>	<u>5,506,043</u>	<u>4,896,607</u>	<u>-609,436</u>

Impact Fees Parks & Recreation

Major Variances

Budget has been adjusted to reflect available funding.

Budgetary Costs	FY 2006 Actual	FY 2007 Adopted	FY 2008 Continuation	FY 2008 Issues	FY 2008 Proposed	FY 2008 Variance
Personnel Expenditures	15,292	26,387	0	0	0	-26,387
Capital Outlay Expenditures	263,498	1,110,613	750,517	0	750,517	-360,096
Total Net Operating Budget	278,790	1,137,000	750,517	0	750,517	-386,483
Total Budgetary Costs	278,790	1,137,000	750,517	0	750,517	-386,483

Funding Sources	FY 2006 Actual	FY 2007 Adopted	FY 2008 Proposed	FY 2008 Variance
Impact Fees Fund - Parks	278,790	1,137,000	750,517	-386,483
Total Revenues	278,790	1,137,000	750,517	-386,483

**Monroe County Board of County Commissioners
Fiscal Year 2008 Tentatively Adpoted September 12, 2007 Proposed Budget**

Wastewater MSTUs

Budgetary Costs	FY 2006 Actual	FY 2007 Adopted	FY 2008 Continuation	FY 2008 Issues	FY 2008 Proposed	FY 2008 Variance
Personnel Expenditures	0	0	153,420	0	153,420	153,420
Operating Expenditures	1,573,244	5,060,864	2,245,494	0	2,245,494	-2,815,370
Total Net Operating Budget	1,573,244	5,060,864	2,398,914	0	2,398,914	-2,661,950
Total Budgetary Costs	1,573,244	5,060,864	2,398,914	0	2,398,914	-2,661,950

Funding Sources	FY 2006 Actual	FY 2007 Adopted	FY 2008 Proposed	FY 2008 Variance
Marathon Municipal Service Taxing Unit	1,045,912	1,597,339	213,380	-1,383,959
Bay Point Municipal Service Taxing Unit	0	77,000	83,693	6,693
Big Coppitt Municipal Service Taxing Unit	0	237,763	224,975	-12,788
Key Largo Municipal Service Taxing Unit	527,333	2,096,822	1,099,649	-997,173
Stock Island Wastewater MSTU	0	173,494	322,581	149,087
Cudjoe-Sugarloaf Municipal Service Taxing Unit	0	281,341	290,987	9,646
Big Pine Municipal Service Taxing Unit	0	457,668	0	-457,668
Conch Key Municipal Service Taxing Unit.	0	6,313	5,438	-875
Long Key, Layton Municipal Service Taxing Unit	0	40,285	31,808	-8,477
Duck Key Municipal Service Taxing Unit	0	92,839	126,403	33,564
Total Revenues	1,573,244	5,060,864	2,398,914	-2,661,950

Staffing Summary	FY 2006 Actual	FY 2007 Adopted	FY 2008 Continuation	FY 2008 Issues	FY 2008 Proposed	FY 2008 Variance
Professionals	0.00	0.00	1.00	0.00	1.00	1.00
Technicians	0.00	0.00	1.00	0.00	1.00	1.00
Total Full-Time Equivalents (FTE)	0.00	0.00	2.00	0.00	2.00	2.00
Total Authorized Positions	0.00	0.00	2.00	0.00	2.00	2.00